

Cat[®] Remanufactured Hydraulic Components



Maximum Productivity

- Deliver the same performance and life as new Caterpillar[®] components
- Are backed with same-as-new parts warranty
- Are the broadest line of remanufactured hydraulic components in the industry
- Are a fraction of the price of new

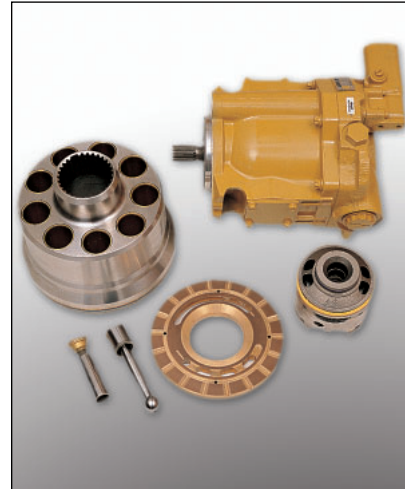
Caterpillar. The difference counts.™

The highly trained experts at your Cat[®] Dealer and authorized Cat parts and service locations define world-class product support by offering you the right parts and service solutions, when and where you need them.

We keep your machine up and running to maximize your investment.

CATERPILLAR[®]

Cat Remanufactured Hydraulic Components



The difference is in the details

Reman hydraulic cylinders and rods

- All tubes, rods, and other components are fully remanufactured to Cat specifications or replaced with new Cat® parts.
- All rods are induction-hardened, improving resistance to nicks and dents and extending seal life.
- Most rods feature inertia-welded eyes for superior strength.
- All required new bearings are installed.

Reman hydraulic pumps, motors, and components

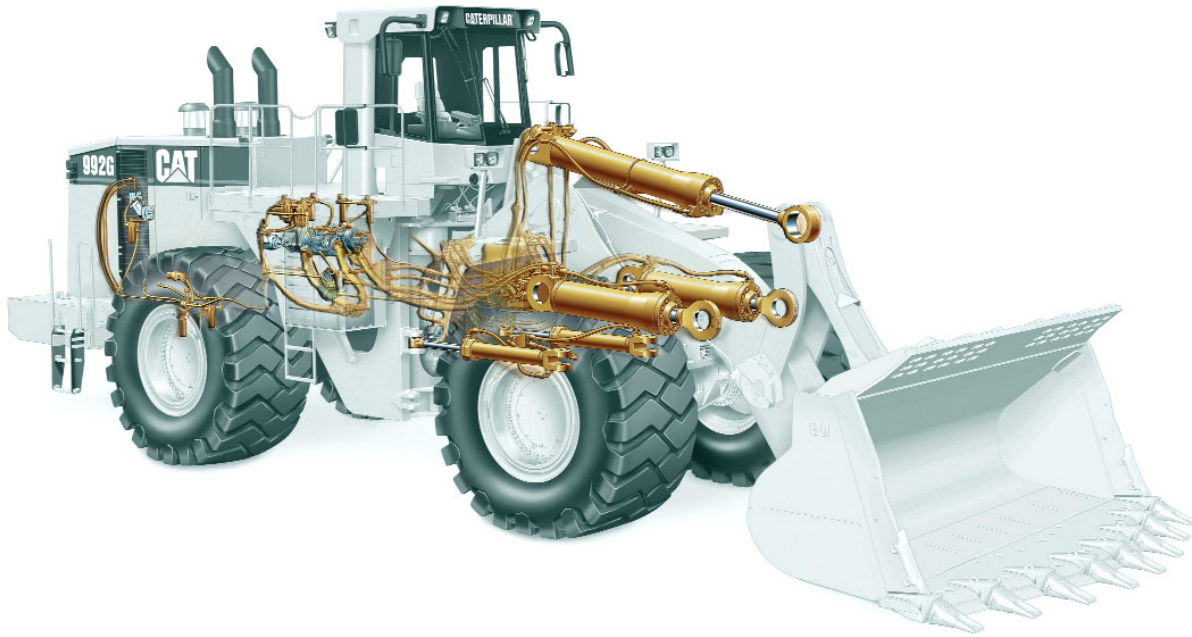
- All returned units are disassembled and thoroughly cleaned and inspected.
- Port plates are reconditioned and updated to the latest designs—or replaced with new parts.
- Piston slippers and pistons are reconditioned or replaced.
- Barrel assembly faces are remachined, and bushings are replaced and machined to new specifications.
- Vane pump rotors and cams are remanufactured to Cat specifications or replaced with new components.
- Vanes are all replaced with new components.
- All cartridges, pumps, and motors are adjusted and tested to ensure like-new performance.

Core exchanges help reduce your costs

The price of your Cat Reman hydraulic component is based on the condition of your used component—so the better the condition of your core, the more you save. Because Cat hydraulic components are designed to be remanufactured, we can often award credit even when you think a component has no value left. That means the price you pay for Cat Reman cylinders, rods, pumps, and motors is always less than that of new parts.

Coverage charts

Refer to the following charts to find the components available. However, please check with your local Cat Dealer for the latest information, as we are continually expanding coverage.



Agricultural Equipment

Machine Model	Cylinders & Rods	Pumps & Motors	Pump & Motor Components
35		●	
45		●	
55		●	
65/B/C/D/E	●	●	
70		●	
70C	●	●	
70D/E		●	
75/C/D/E	●	●	
85		●	
85C/D/E	●	●	
95/C/D		●	
95E	●	●	

Articulated Trucks

Machine Model	Cylinders & Rods	Pumps & Motors	Pump & Motor Components
D25C/D	●	●	
D30C/D	●	●	
D35C	●	●	
D40D	●	●	
D250B	●	●	
D250D/E/EII	●	●	
D250E		●	
D300B/D	●	●	
D300E/EII		●	
D350C/D/E/EII	●	●	
D350E		●	
D400/D/E/EII	●	●	
D400E		●	

Backhoe Loaders

Machine Model	Cylinders & Rods	Pumps & Motors	Pump & Motor Components
416/B/C	●	●	
416D/E		●	
420D/E		●	
424D		●	
426/B/C	●	●	
428/B/C	●	●	
430D/E		●	
432D		●	
436/B/C	●	●	
438/B/C	●	●	
438D		●	
442D		●	
446/B	●	●	

Cat Remanufactured Hydraulic Components

Forestry Equipment

Machine Model	Cylinders & Rods	Pumps & Motors	Pump & Motor Components
508	●		
515	●	●	
517	●		
518	●	●	
518C	●	●	
520C/D		●	
522C/D		●	
525B		●	
525	●	●	
527	●	●	
528	●	●	
528B	●	●	
530B	●	●	
531	●		
533		●	
535B/C		●	
539		●	
543		●	
545/C		●	
550	●	●	
550B		●	
560/B		●	
554		●	
570	●	●	
570B		●	
574	●	●	
580	●	●	
580B		●	
FB-518		●	

Integrated Toolcarriers

Machine Model	Cylinders & Rods	Pumps & Motors	Pump & Motor Components
IT12	●		
IT14G	●	●	
IT18/B	●	●	
IT18F		●	
IT24F	●	●	
IT28/B	●	●	
IT28F/G	●	●	
IT38F	●	●	
IT38G	●	●	
IT62G	●	●	

Wheeled Hydraulic Excavators

Machine Model	Cylinders & Rods	Pumps & Motors	Pump & Motor Components
M312/B		●	
M315/B/C		●	
M316C		●	
M318	●	●	
M318C			
M320	●	●	
M322C		●	
M325C		●	

Front Shovels

Machine Model	Cylinders & Rods	Pumps & Motors	Pump & Motor Components
5080	●	●	
5090B		●	
5110/B		●	
5130/B	●	●	
5230	●	●	
5230B		●	

Hydraulic Excavators

Machine Model	Cylinders & Rods	Pumps & Motors	Pump & Motor Components
215/B/C	●	●	●
215D	●	●	
219	●	●	●
219D	●	●	●
225/B	●	●	●
225D	●	●	●
227	●	●	●
229	●	●	●
229D	●	●	
231D	●	●	●
235/B/C	●	●	●
235D	●	●	●
245/B	●	●	●
245D	●	●	
E200B		●	
307/B	●		
311/B	●		
312/B	●	●	
315/B	●		
317/B	●		
318B	●	●	
318C		●	
320/B/D/S	●	●	
320C/D		●	
322/B	●	●	
322C		●	
325/B/D	●	●	
325C/D		●	
330/B	●	●	
330C/D		●	
345		●	
345B	●	●	
350	●	●	
365/B		●	
365B	●	●	
375	●	●	
385/B/C		●	

Motor Graders			
Machine Model	Cylinders & Rods	Pumps & Motors	Pump & Motor Components
12F		●	
12G	●	●	●
12H	●	●	
14E		●	
14G	●	●	●
14H	●	●	
16		●	
16G	●	●	●
16H	●	●	
24H	●	●	
120C/120G	●	●	●
120H	●	●	
130G/130H	●	●	●
135H	●	●	
140C/140G	●	●	●
140H	●	●	
143H	●	●	
160G/160H	●	●	
163H	●	●	

Off-highway Trucks			
Machine Model	Cylinders & Rods	Pumps & Motors	Pump & Motor Components
69D		●	
768B	●	●	
768C	●		
769/769B	●	●	
769C/769D	●		
771C/771D	●		
772	●	●	
772B	●		
773	●	●	
773B/773D	●		
773E			
775B/775D	●		
773E			
776/776B/776C/776D	●		
777/777B/777C/777D	●		
783B			
784B/784C	●	●	
785/785B/785C	●	●	
789/789B/789C	●	●	
793/793B/793C	●	●	
797	●	●	
797B			

Paving Products			
Machine Model	Cylinders & Rods	Pumps & Motors	Pump & Motor Components
AP-200		●	
AP-650B/D		●	
AP-800/B		●	
AP-800C/D		●	
AP-900B		●	
AP-1000/B		●	
AP-1050/B		●	
AP-1055B		●	
BG-214B		●	
BG-224B/C		●	
BG-225C/D/E		●	
BG-230		●	
BG-240B/C		●	
BG-245C		●	
BG-260C		●	
BG-2455C		●	
CB-434/B/C		●	
CB-444		●	
CB-514		●	
CB-523		●	
CB-525/B		●	
CB-531C/D		●	
CB-534/B		●	
CB-534C/D		●	
CB-535B		●	
CB-544		●	
CB-545		●	
CB-614		●	
CB-634/C/D		●	
CP-323/C		●	
CP-433B/C		●	
CP-533/C/D		●	
CP-553		●	
CP-563/C/D/E		●	
CP-573/D/E		●	
CP-583/D		●	
CP-663E		●	
CS-323/C		●	
CS-431B		●	
CS-431C		●	
CS-433B/C		●	
CS-531/C/D		●	
CS-533/C/D/E		●	
CS-551		●	
CS-553		●	
CS-563/C/D/E/F		●	
CS-573/C/D/E		●	
CS-583/C/D/E		●	
CS-663E		●	
CS-683E		●	

Cat Remanufactured Hydraulic Components

Paving Products (cont.)

Machine Model	Cylinders & Rods	Pumps & Motors	Pump & Motor Components
PF290B		●	
PM-465		●	
PM-565/B/C		●	
PR-75		●	
PR-450/C		●	
PR-750B/C		●	
PR-1000/A		●	
PS-110		●	
PS-130		●	
PS-150B/C		●	
PS-200B		●	
PS-290B		●	
PS-360B		●	
RM-250C		●	
RM-350/B		●	
RM-465B		●	
RR-250/B		●	
SF-175		●	
SM-350		●	
SS-250/B		●	

Pipelayers

Machine Model	Cylinders & Rods	Pumps & Motors	Pump & Motor Components
561B/C/H/M		●	
572E/F/G/R		●	
5P583/H/K		●	
594/H		●	

Underground Mining Equipment

Machine Model	Cylinders & Rods	Pumps & Motors	Pump & Motor Components
R1600	●	●	

Skid Steer Loaders/Multi Terrain Loaders

Machine Model	Cylinders & Rods	Pumps & Motors	Pump & Motor Components
216/B		●	
226/B		●	
228		●	
231		●	
232/B		●	
236/B		●	
242/B		●	
246/B		●	
247/B		●	
248/B		●	
252/B		●	
257/B		●	
262/B		●	
267/B		●	
268B		●	
277/B		●	
287/B		●	

Material Handlers

Machine Model	Cylinders & Rods	Pumps & Motors	Pump & Motor Components
RT40/50/60/RTC60		●	
TH35		●	
TH38		●	
TH62	●		
TH63	●		
TH82	●		
TH83	●		
TH103		●	
TK711		●	
TK721		●	
TK722		●	
TK732		●	
TK1051		●	

Track-type Loaders

Machine Model	Cylinders & Rods	Pumps & Motors	Pump & Motor Components
931B/C	●		
933C/G	●	●	
935B/C	●	●	
939C	●	●	
941	●	●	
941B	●	●	
943	●	●	●
951B/C	●	●	
953/B	●	●	●
953C	●	●	
955C/E	●		
955H		●	
955K/L	●	●	
963	●	●	●
963B/C	●	●	●
973	●	●	●
973C		●	
977H/K/L	●	●	
983	●	●	
983B		●	

Track-type Tractors			
Machine Model	Cylinders & Rods	Pumps & Motors	Pump & Motor Components
D3/B	●		
D3C	●	●	
D3G		●	
D4B	●		
D4G		●	
D4C/D/E/H	●	●	
D5	●	●	
D5B	●		
D5C	●	●	
D5H/M	●	●	
D6	●		
D6B/C	●	●	
D6D/E	●		
D6H	●	●	
D6M	●		
D6R	●	●	
D7E/F/G/H/R	●	●	
D8H/K/L/N/R	●	●	
D9G/H/L/N/R	●	●	
D10	●		
D10N/R	●	●	
D11N/DR	●	●	

Wheel Tractors & Compactors			
Machine Model	Cylinders & Rods	Pumps & Motors	Pump & Motor Components
814/B/F	●	●	
815/B	●	●	
815F	●	●	
816/B	●	●	
816F	●	●	
824/B/C	●	●	
824G/H		●	
825B/C	●	●	
825G/H		●	
826B/C	●	●	
826G/H		●	
830M	●	●	
834/B	●	●	
834G/H		●	
835	●	●	
836	●	●	
836G/H		●	
844	●	●	
854G	●	●	

Wheel-Tractor Scrapers			
Machine Model	Cylinders & Rods	Pumps & Motors	Pump & Motor Components
611	●	●	
613/B/C	●	●	
615/C	●	●	
619C		●	
621/B/E/F/R/S	●	●	
621G		●	
623/B/E/F	●	●	
623G		●	
627/B/E/F	●	●	
627G		●	
630B	●	●	
631A/G		●	
631B/C	●	●	
631D	●	●	
631E	●	●	
632	●	●	
633/B/C/D/E	●	●	
633G		●	
637	●	●	
637B/D/E	●	●	
637F/G		●	
639D	●	●	
639E		●	
641/B	●	●	
650/B	●	●	
651/B/E	●	●	
651E/F		●	
657/B/E	●	●	
657F/G		●	
660/B	●	●	
666	●	●	
666B		●	

Wheel Loaders			
Machine Model	Cylinders & Rods	Pumps & Motors	Pump & Motor Components
902	●		
906	●		
910/E/F	●		
914G	●	●	
916	●	●	
918F	●	●	
920	●	●	
922A/B		●	
922C			●
924G		●	
924F	●	●	
926/E	●	●	
928F	●	●	
928G	●	●	
930	●	●	
930R	●	●	
936/E/F	●	●	
938F/G	●	●	
943	●	●	
944/A		●	
950/B/E/F/G	●	●	
950H		●	
960F	●	●	
960G		●	
962G	●	●	
962H		●	
966A/B/C/E/F	●	●	
966D		●	
966G	●	●	
966R	●	●	
970F	●	●	
972G	●		
980/B	●	●	
980C/F	●		
980G	●	●	
983	●	●	
983B		●	
988	●	●	●
988B	●		
988F	●	●	
988G/H		●	
990	●	●	●
992/B	●	●	
992C	●		●
992D	●		●
992G	●	●	●
994/D	●	●	●
992G	●	●	

Cat Remanufactured Hydraulic Components



- The Caterpillar commitment to service and support helps maximize your productivity and lower your costs.

- Process control throughout remanufacturing help to ensure superior quality, while differentiating Cat Reman components from those offered by rebuild or repair shops.

- Caterpillar incorporates the latest engineering updates into all Cat remanufactured hydraulic components.

Caterpillar. The difference counts.™

CATERPILLAR®