

# Cat<sup>®</sup> Spark Plugs

For Gas Engines



## Genuine Cat<sup>®</sup> Parts

Cat Spark Plugs – The Best Maintenance Option

Cat<sup>®</sup> engines operate in all types of applications. Cat genuine parts are designed to deliver optimum performance in harsh industrial applications.

Unlike other spark plugs, Cat plugs are designed to provide the maximum amount of efficiency during each service interval. Cat plugs are designed to provide easy installation and removal, limiting the amount of downtime required during each maintenance interval so that your engine is back up and running as soon as possible.



### Benefits of Cat Spark Plugs:

- Lower Owning and Operating Costs
- Higher Productivity
- Easy Maintenance



# Cat® Spark Plugs for Gas Engines



**3500/3600 Spark Plug**

## Features and Benefits

**The 3500/3600 plug was designed with maintenance in mind...**

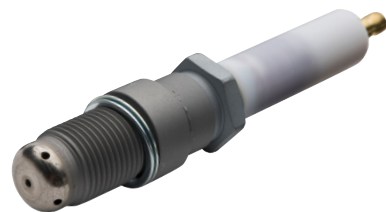
- Zinc plated terminal provides lubricity to allow for easy installation and removal
- Pure Iridium center electrode precious metal provides maximum wear resistance resulting in less regapping
- Self retained gasket stays in place for easy installation and removal



**Bio-Gas Spark Plug**

**The Bio-Gas plug shares the same benefits of the 3500/3600 plug, but is a more robust option for landfill applications...**

- Longer Life with enhanced internal electrode material
- Increased Service Life
- Enhanced Reliability



**Pre-Chamber Spark Plug**

**The Pre-Chamber plug was designed to maximize productivity and ease of maintenance...**

- Specifically customized for the combustion process in the G3500 C&E product to maximize engine performance and efficiency
- Requires no regapping.
- Provides extended life through the use of precious metal electrodes that resist corrosion and wear

## Installation Tips

- Always re-gap spark plugs when they have been removed
- Always use a new gasket when installing a plug
- Spark plug should turn into seat by hand
- Always install a spark plug with a torque wrench and spark plug socket

## Removal Tips

- Spark plug should be able to be removed by hand after breaking initial torque
- If unable to remove by hand, apply penetrating oil to threads and rock spark plug back and forth until loose
- Once removed, clean spark plug with Spark Plug Seat Cleaner to remove debris from seat and threads

## Spark Plug Tools

- 4C-4601 – Spark Plug Socket
- 9S-5031 – Socket-5/8" Deep Well
- 216-1685 – Spark Plug Socket
- 154-9521 – 14mm Thread/ Seat Cleaner
- 9U-7511 – 18mm Thread/Seat Cleaner

## Advantage

Guaranteed for fit and function, Genuine Cat Parts offer the right combination of quality and price for your commercial engine. Cat Parts provide something that the other brands can never match...total support of your Caterpillar Authorized Service Locations.

See your Caterpillar Authorized Service location for specific part numbers.

## CAT® DEALERS DEFINE WORLD-CLASS PRODUCT SUPPORT.

We offer you the right parts and service solutions, when and where you need them.

The Cat Dealer network of highly trained experts can help you maximize your equipment investment.

