



# THE GC RANGE PRODUCT BROCHURE





# CONTENTS

<b>OVERVIEW GC PRODUCTS</b>	<b>03</b>
<b>THE RELIABLE 320 GC</b>	<b>05</b>
<b>THE ECONOMICAL 330 GC</b>	<b>07</b>
<b>THE FUEL COMPETITIVE 336 GC</b>	<b>09</b>
<b>THE ECONOMICAL 345 GC</b>	<b>11</b>
<b>THE RELIABLE 140 GC</b>	<b>13</b>
<b>THE ECONOMICAL 950 GC</b>	<b>15</b>
<b>THE ECONOMICAL 966 GC</b>	<b>17</b>
<b>THE ECONOMICAL D6 GC</b>	<b>19</b>
<b>THE RELIABLE 740 GC</b>	<b>21</b>
<b>THE ECONOMICAL CS10 GC, CS11 GC &amp; CS12 GC</b>	<b>23</b>
<b>DEALER CONTACT DETAILS</b>	<b>25</b>

*At Caterpillar, customers come first. We recognize that the world is rapidly changing and the pressures on your business are immense. This is the reason why we launched the GC range. To provide you with a sustainable solution. The GC range is a game changer for customers looking for high performance machines that are simple, durable, fuel efficient and easy to use. And of course reliable – Cat® reliable.*

## GC IS THE NEW CAT® STANDARD



### **SIMPLY RELIABLE**

Improved durability enhances a new standard of reliability with the GC range.



### **SIMPLY ECONOMICAL**

Simple maintenance, with extended service intervals.



### **SIMPLY FUEL COMPETITIVE**

Lower engine speeds, enhanced hydraulic functionality brings improved fuel efficiency.



### **SIMPLY DURABLE**

Built on the legacy of high-quality, proven products, the GC range includes exactly what you expect from a legacy.





**LOWEST COST PER HOUR**

- Up to 20% less maintenance costs, as compared to a 320D2 L
- Up to 25% less fuel consumption, as compared to a 320D2 L

**RELIABILITY AND DURABILITY**

- Core components shared with Performance models
- 2 years/4.000hr EPP standard with possibility to extend

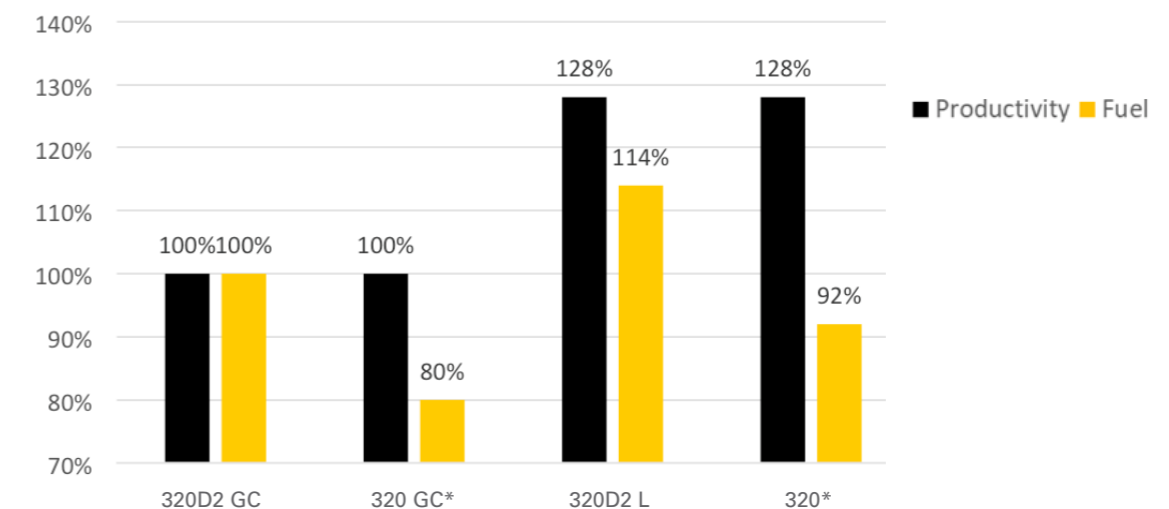
**VERSATILITY**

- A range of Cat WorkTools to get every job done

Engine Model:	C4.4
Operating Weight:	19,800g
Gross Power:	108 kW / 145hp
Bucket:	1.0 -1.19 M3
Max reach:	9850mm
Max Digging Depth:	6710mm

HYDRAULIC SYSTEM		
Main System - Max Flow - Implement	429 L/min (215 x 2 pumps)	113 gal/min (57 x 2 pumps)
Maximum Pressure - Equipment	35 000 kPa	5,075 psi

**GRAPH FOR FUEL CONSUMPTION VS PRODUCTIVITY**



\* Productivity and fuel difference for 320 GC and 320 NGH obtained from Production Study in Turkey in truck loading application, June 2018 (PEDP9137-00)

//

The lifespan of the fuel and oil filters in the hydraulic system for 320 GC allow us to have longer intervals between service on this machine. It saves money and time and, in this industry, everything must be cost-effective.

//

Filippo Bevilacqua,  
Riviera Hire (South Africa)





**A STRONG LEGACY, MADE BETTER**

- Same productivity as a 330D2 L but fuel consumption down up to 12%
- Up to 20% less maintenance costs, as compared to a 330D2 L

**VERSATILITY**

- A range of booms and sticks sizes and Cat WorkTools to get every job done

**SAFETY AT ITS CORE**

- ROPS cab and rearview camera standard
- All daily checks performed from ground level

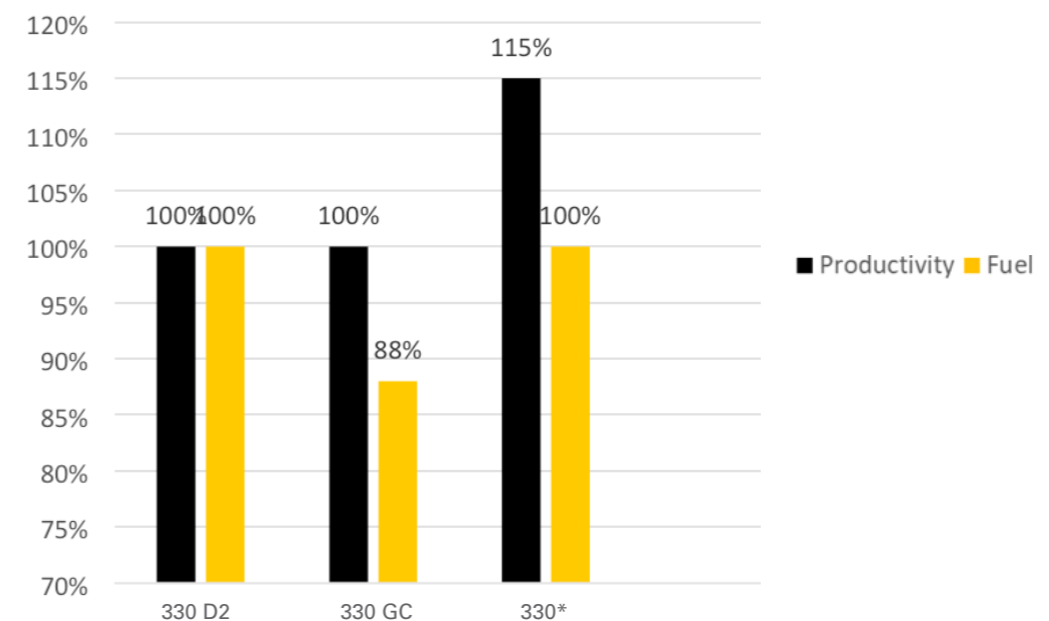
Engine Model:	C7.1
Gross Power:	159kW / 213hp
Operating Weight:	27,500kg - 29,100kg
Maximum Reach:	10,690mm
Maximum Digging Depth:	7,260mm
Bucket:	1,54 M3- 2.1M3

**HYDRAULIC SYSTEM**

Main System - Max Flow - Implement	560 L/min (280 x 2 pumps)	148 gal/min (74 x 2 pumps)
Maximum Pressure - Equipment	35 000 kPa	5,075 psi



**GRAPH FOR FUEL CONSUMPTION**



\*Productivity and fuel differences with D2 has been taken from 330 Brochure published





**LESS IS MORE**

- Up to 15% less maintenance costs, as compared to a 336D2 GC
- Up to 15% lower fuel consumption, as compared to a 336D2 GC

**VERSATILITY**

- Available in quarry and earthmoving configurations
- A range of Cat WorkTools to get every job done

**SAFETY AT ITS CORE**

- ROPS cab and rearview camera standard
- Routine maintenance checks can be performed faster, easier and safer with ground-level access

Engine Model:	C71
Gross Power:	195kW / 262hp
Operating Weight:	34,900kg - 36,300kg
Maximum Reach:	11,050mm
Maximum Digging Depth:	7,520mm
Bucket:	1.88M3- 2.2M3

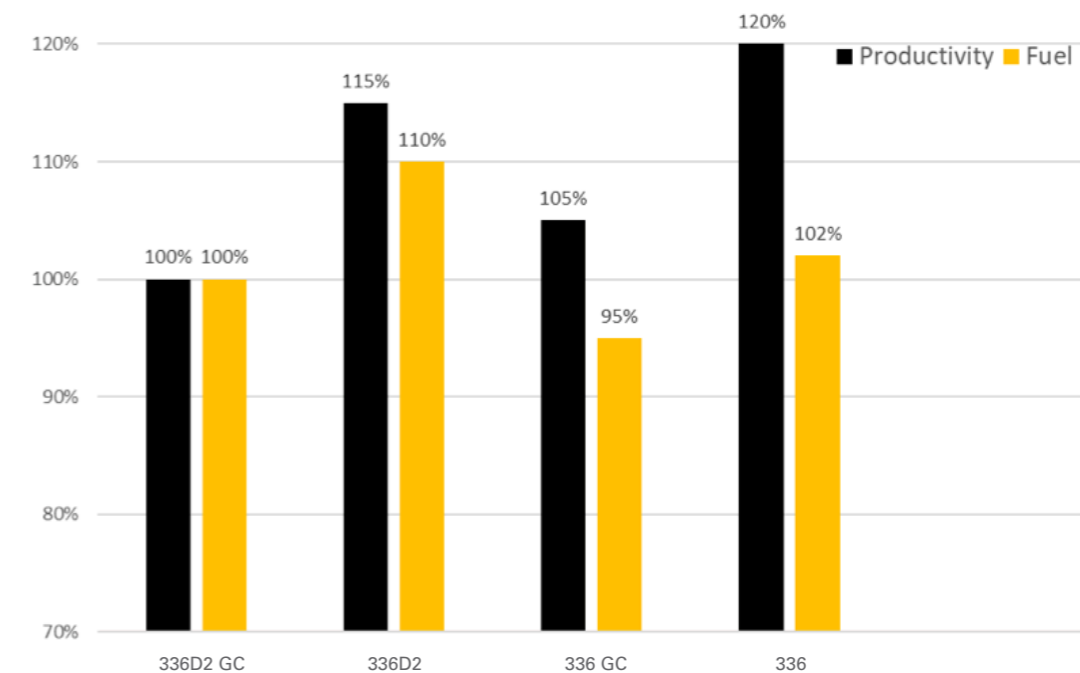
HYDRAULIC SYSTEM		
Main System - Max Flow - Implement	559 L/min (279 x 2 pumps)	148 gal/min (74 x 2 pumps)
Maximum Pressure - Equipment	35 000 kPa	5,076 psi

//

The Cat 336 GC is a great machine. It is a preferred model, because of its performance, agility and fuel economy. We decided to go for the 336 GC because of its compatibility with rough terrain conditions, while maintaining a comfortable cabin. It also has an easy-to-use heating and cooling system, and most importantly, operators are pleased with the machine //

Huseyin Eslen, Irem Construction Company (Turkey)

**GRAPH FOR FUEL CONSUMPTION**







**A WHOLE NEW LEVEL**

- Up to 20% less maintenance costs, as compared to a 340D2 L
- Up to 15% improved productivity, as compared to a 340D2 L

**VERSATILITY**

- Available in quarry and earthmoving configurations
- A range of Cat WorkTools to get every job done

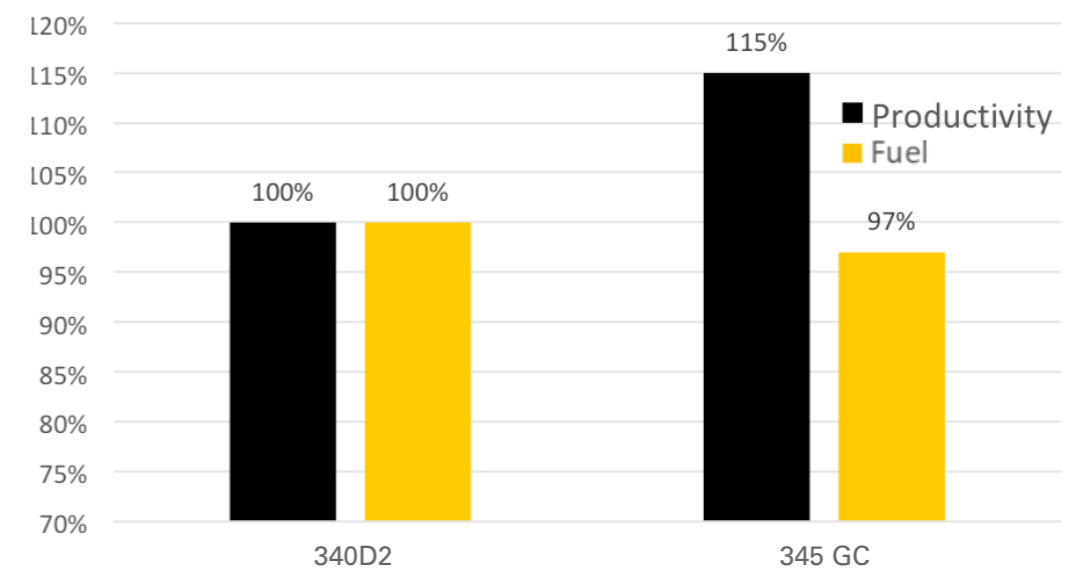
**ECONOMICAL BY NATURE**

- The capability of a 349 for a fraction of the cost
- Outstanding fuel efficiency in bucket and hammer applications

Engine Model:	C9.3B
Gross Power:	259kW / 347hp
Operating Weight:	42,200kg - 43,300kg
Maximum Reach:	11,710mm
Maximum Digging Depth:	7,650mm
Bucket:	1.87M3 – 2.7M3

HYDRAULIC SYSTEM		
Main System - Max Flow - Implement	630 L/min (315 x 2 pumps)	166 gal/min (83x 2 pumps)
Maximum Pressure - Equipment	35 000 kPa	5,076 psi

**GRAPH FOR FUEL CONSUMPTION**



**//**

*The Cat 345 GC is wonderful machine. It performs well and efficiently. Its ability to pull and tear is quite suitable for us working in marble quarries. The touch screen makes it more easy to operate.*

**//**

*Tahsin Durvdağ,  
AGS Mining (Turkey)*





**FINE GRADE YOUR BOTTOM LINE**

- Low cost per hour
- Up to a 5% fuel consumption reduction with use of eco mode

**EASE OF OPERATION MADE COMFORTABLE**

- Powershift transmission with shifting on the go, no inching pedal
- Lever control pattern

**PERFORMANCE AND RELIABILITY: STANDARD**

- Easy to maintain and service
- Proven components, dealer support
- Built on the legacy of the 140K

<b>Weight:</b>	<b>17,390kg</b>
<b>Rear/Front:</b>	<b>12,173kg / 5,217kg</b>
<b>Power:</b>	<b>176-196hp</b>
<b>Recommended Blade:</b>	<b>4.3m</b>



*Our 140 GC has been working nine hours a day since it was delivered. We are very happy with the quality of the machine, the output, the performance and the fuel consumption. It's the best value for money compared to other brands that we have.*



*Corne Kruger,  
Three I Development  
(South Africa)*







**A MACHINE BUILT FROM OUR ROOTS**

- Easy to operate with pilot implement controls
- Lowest fuel consumption
- Proven reliability and performance of components

**SUPERIOR PERFORMANCE**

- Best dump height in class
- Performance Series Buckets

**SERVICEABILITY**

- Easy to service and maintain

Operating Weight:	18,433kg
Max Hinge Pin Height:	4,188 m
Full Turn Static Tipping Load:	11,559kg



*We construct high-rise buildings and have been using the 950 GC for two years. The bucket size is very suitable for our job—it's even suitable for shifting materials, excavation and mixing raw materials*



*Mohamed Hassan,  
Dar Aladham Constructions  
(UAE)*







**OPERATOR ENVIRONMENT**

- Easy to operate with pilot implement controls
- Common GC cab with standard Air-Conditioning
- Enhanced visibility with rear view camera

**THE LEGACY LIVES ON**

- Built with proven Cat components
- Designed with 60 years of Innovation Legacy

**A TRUE PERFORMER**

- Better and easier fill factors with Performance Series Buckets
- Easy to service and maintain



Operating Weight:	21,577kg
Max Hinge Pin Height:	4,256mm
Full Turn Static Tipping Load:	14,568kg







**SIMPLE DESIGN**

- Comfortable cab with easy-to-operate controls
- Easy to diagnose, maintain and repair, even in remote locations
- Solid dozing performance for construction, oil & gas, mining and forestry

**THE LEGACY LIVES ON**

- Up to 10% more productivity, as compared to a D7G
- Horsepower, weight and blade capacity to take on demanding work
- Caterpillar designed and built with proven components
- Cat® 3306 mechanical engine, high drive durability and robust structures

**ECONOMICAL BY NATURE**

- Cost effective to own and operate
- Easy to service and maintain with widely available parts
- Fuel efficient



<b>Weight:</b>	<b>21,460kg</b>
<b>Power:</b>	<b>221hp</b>
<b>Blade Capacity:</b>	<b>6.13m3</b>







**PRODUCTIVITY THANKS TO:**

- Differentiated price versus the 745
- Lower owning and operating costs
- Payload choice between 735 and 745

**ALL KEY FEATURES OF A CAT ARTICULATED TRUCK**

- Same technology and automatic systems as all other models (Advanced Automatic Traction Control, Automatic Retarder Control, Assisted Hoist and Stability Assist)
- GC designates standard vs optional equipment

**NEW CAB**

- Improved operator comfort and efficiency

<b>Engine Model:</b>	<b>C15</b>
<b>Net Power:</b>	<b>441hp</b>
<b>Rated Payload:</b>	<b>36.3tonnes</b>
<b>Empty Weight:</b>	<b>32,368kg</b>
<b>Transmission:</b>	<b>CX38</b>
<b>Gears:</b>	<b>9F / 2R</b>







**SIMPLE TO OPERATE**

- Easy-to-use interface
- Excellent visibility
- Auto-vibe function

**LOW OPERATING COSTS & EXTENDED MAINTENANCE INTERVALS**

- Up to 18% fuel savings with Eco-Mode
- Sealed for life hitch
- Ultra-reliable pod-style vibratory system

**SUPERIOR COMPACTION PERFORMANCE: UPTO 17% FEWER PASSES**

- Increased amplitude and static linear load
- Flexible extra weight kits
- Optional Cat Compaction Control Technology

	CS10 GC	CS11 GC	CS12 GC
Engine Model:	C 4.4	C 4.4	C 4.4
Operating Weight (w/ Sun Canopy):	9,471 kg	10,803 kg	12,230 kg
Static Linear Load:	26.8 kg/cm	28.1 kg/cm	35.5 kg/cm
Vibratory System High Amplitude:	2.0 mm	2.0 mm	2.0 mm
Vibratory System Low Amplitude:	1.0 mm	1.0 mm	1.0 mm



*CS11 GC is a simple machine, friendly, easy to operate, easy to get your requirements.*



*Shadi Obeidov,  
Al Jaber Group, (UAE)*



*The compaction of this machine is very good, both in high and low amplitude modes. Compared to previous machines I have operated, the compactive effort is higher. The compaction is very quick.*



*Peer Khan,  
Al Jaber Group, (UAE)*





**DEALER**  
**CONTACT DETAILS**

