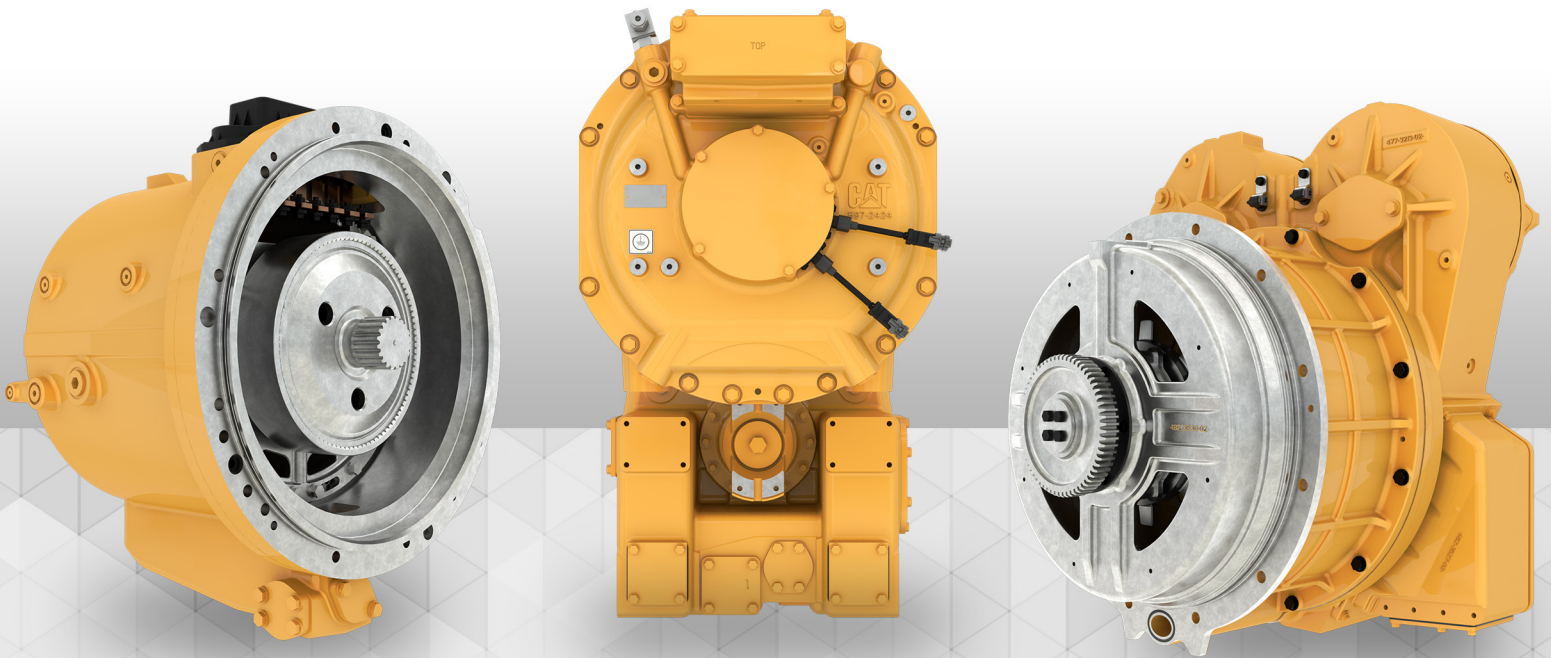


CATERPILLAR OEM SOLUTIONS



CAT[®] ELECTRIFIED COMPONENTS

GENERATORS & MOTORS

95 – 340 kW

Electrify your equipment with a partner that has decades of electric and hybrid off-highway experience.



GENERATOR

95 – 145 kW



Proven Off-highway Switched Reluctance technology.

This generator connects to Cat® inverters and motors rated at 95 - 145 kW.

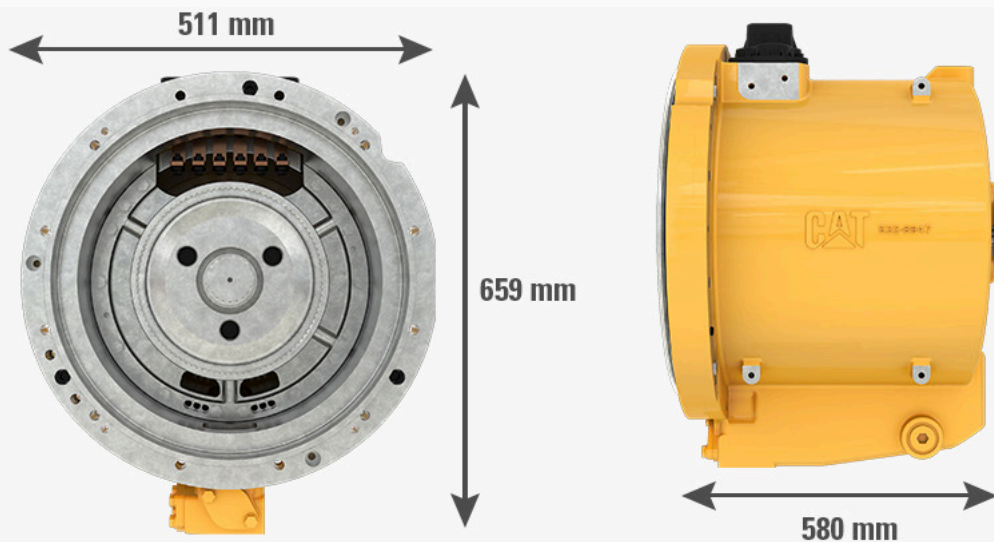
GENERAL RATINGS

Rated Continuous Power	145 kW
Voltage Range	715 VDC
Rated Operating Speeds	800-2300 rpm

MECHANICAL RATINGS

Flywheel Housing Size	SAE 1
Oil Type	TDTO 30 (80-95°C) TDTO 10 (60-75°C)
Coolant Type	Oil Cooled
Maximum Coolant Temperature	70°C
Dry Weight	380 kg

DIMENSIONS



ELECTRIC MOTOR

200 – 250 kW

Proven Off-highway Switched Reluctance technology.

This motor connects to Cat inverters and generators rated at 200 - 250 kW.



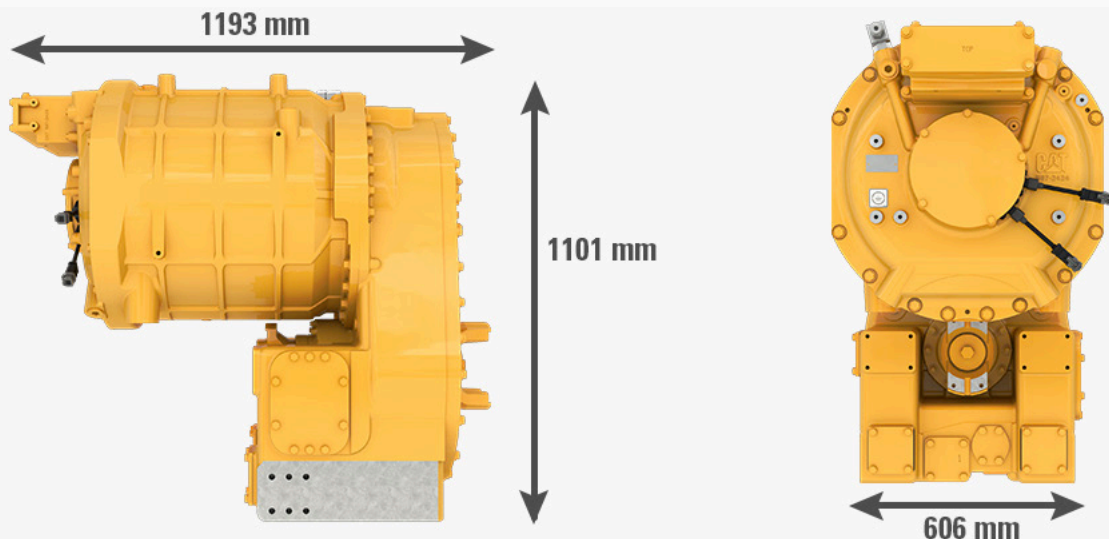
GENERAL RATINGS

Rated Continuous Power	250 kW
Rated Continuous Speed	1120 rpm
Peak Torque	Output: 19500 N·m Rotor: 3800 N·m
Electrical System	650-820 VDC

MECHANICAL RATINGS

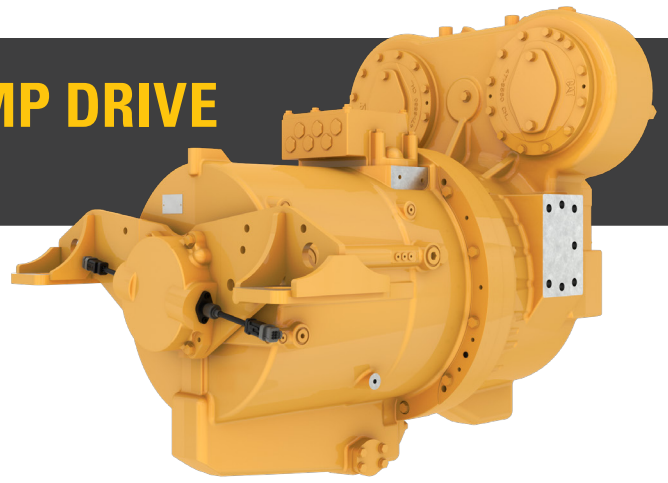
Driveshaft Yokes	Lead end: 9C
Size and Direction	Opposite lead end: 10C* (*configurable)
Oil Type	TDTO 30 (80-95°C) TDTO 10 (60-75°C)
Gear Ratio	5.17 : 1 (Rotor : Yokes)
Coolant Type	50/50 ELC (LCC capable)
Maximum Coolant Temperature	70°C
Mountings	Mounting surfaces for isolation mounts
Yoke Center Distance	182 mm
Dry Weight	1496 kg

DIMENSIONS



ELECTRIC MOTOR WITH PUMP DRIVE

200 – 250 kW



Proven Off-highway Switched Reluctance technology.

This pump drive module connects to Cat inverters and generators rated at 200 - 250 kW.

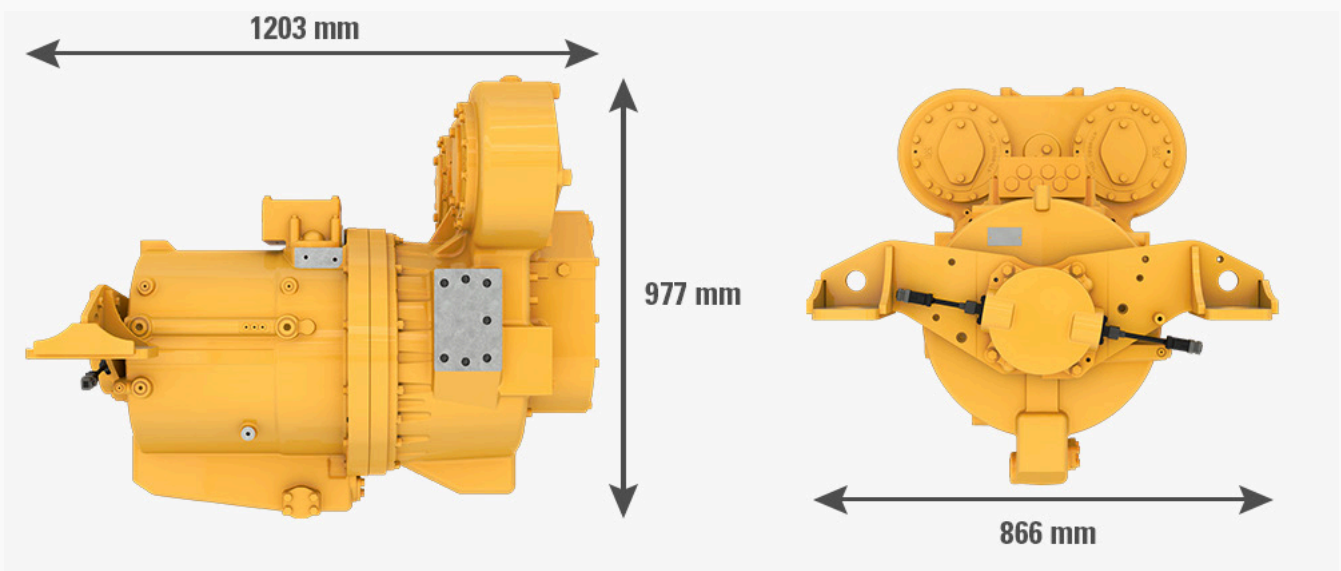
GENERAL RATINGS

Rated Continuous Power	250 kW
Peak Torque	Rotor: 1550 N·m Pump: 3900 N·m
Electrical System	650-820 VDC
Pump Operating Speed	0-2200 rpm

MECHANICAL RATINGS

Oil Type	TDTO 30 (80-95°C) TDTO 10 (60-75°C)
Housing	SAE 1
Drive Ratio	2.54 : 1 (rotor : pump)
Pump Mounting	(2x) SAE-B two bolt (2x) SAE-E four bolt
Mounting	Pad surfaces for isolation mounts
Dry Weight	866 kg

DIMENSIONS

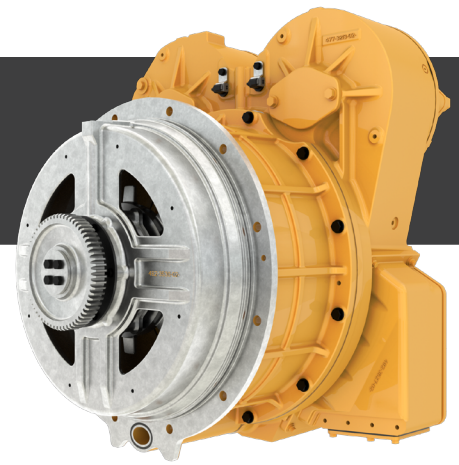


GENERATOR

290 – 340 kW

Proven Off-highway Switched Reluctance technology.

This generator connects to Cat inverters and motors rated at 290 - 340 kW.



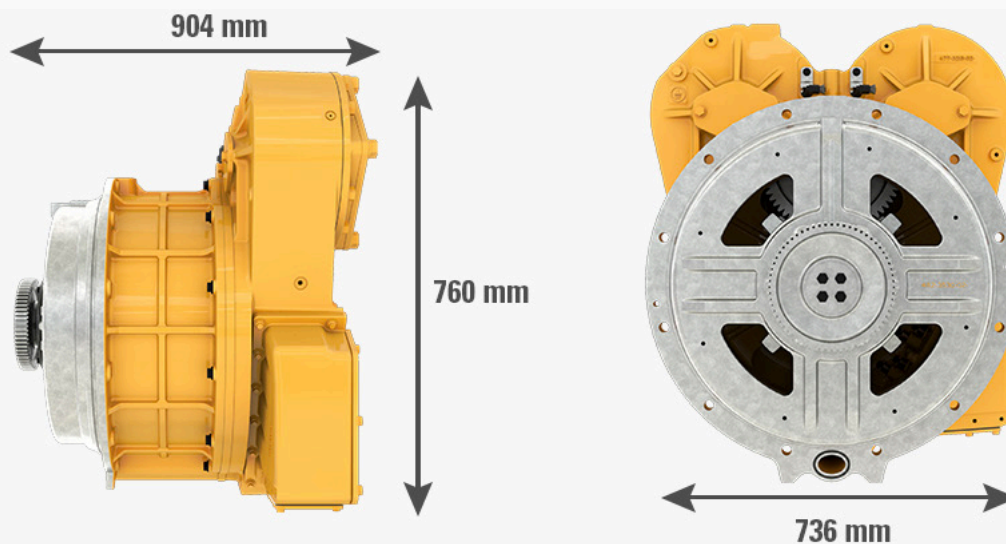
GENERAL RATINGS

Rated Continuous Power	340 kW
Rated Operating Speeds	700 - 2550 rpm
Operating Voltage	715 VDC

MECHANICAL RATINGS

Oil Type	TDTO 30
Maximum Oil Temperature	95°C
Coolant Type	50/50 ELC
Maximum Coolant Temp	70°C
Flywheel Housing Size	SAE 1/2
Pump Drive Output Gear Ratio	1 : 1.2 (engine : pumps)
Pump Drive Torque Rating	1650 N·m
Pump Pad Size	(2x) SAE Code E 4-bolt
Dry Weight	906 kg

DIMENSIONS



ELECTRIC MOTOR

290 – 340 kW

Proven Off-highway Switched Reluctance technology.

This motor connects to Cat inverters and generators rated at 290 - 340 kW.



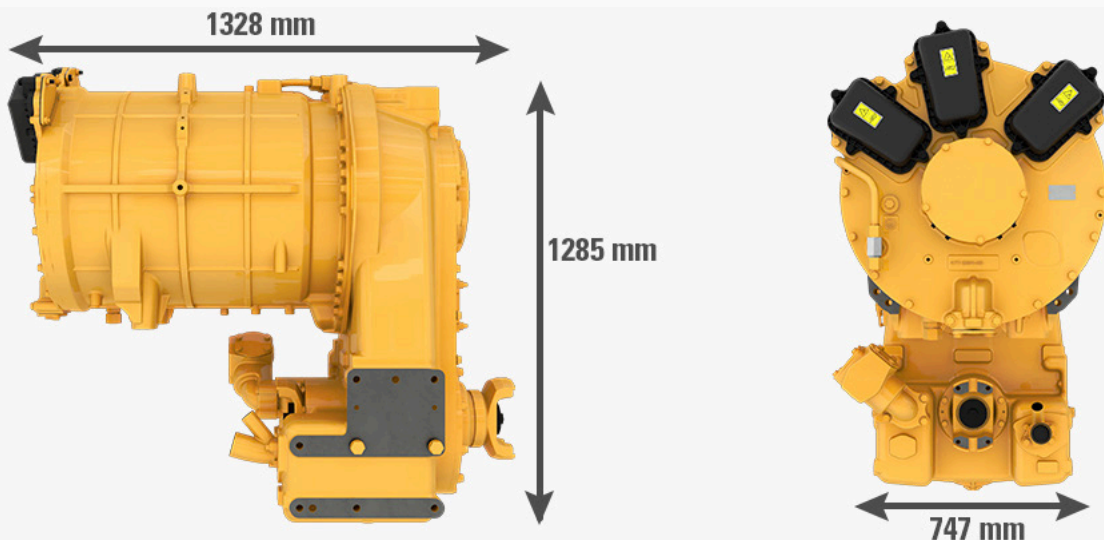
GENERAL RATINGS

Rated Continuous Power	340 kW
Rated Continuous Speed	1500 rpm
Peak Torque	Output: 18600 N·m Rotor : 4200 N·m (Rotor)
Operating Voltage	715 VDC

MECHANICAL RATINGS

Output Gear Ratio	4.43 : 1 (Rotor : Yokes)
Output Flanges	10C Front & Rear
Pump Drive	SAE Class C 4-bolt
Oil Type	TDTO 30
Maximum Oil Temperature	95°C
Maximum Coolant Temperature	70°C
Mountings	Mounting surfaces for isolation mounts
Yoke Center Distance	166 mm
Dry Weight	1774 kg

DIMENSIONS



SUPPORT YOU CAN DEPEND ON.

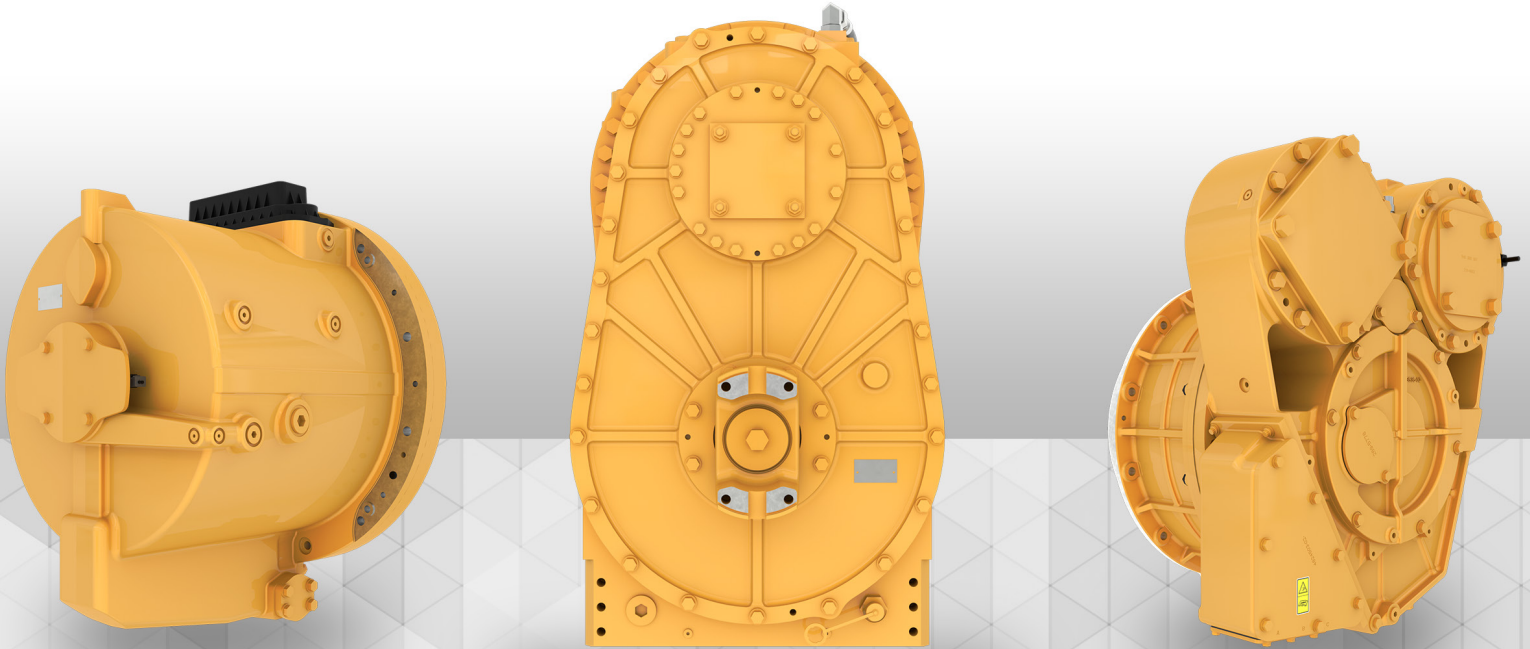


SERVICE & SUPPORT

WE'RE PREPARED WITH EVERYTHING YOU NEED.

World-class product support provided by global dealer and parts network. Cat electric and hybrid components are serviceable by your local Cat dealer.

- » Market-leading warranty
- » Common service tooling and parts stock coverage
- » Industry-leading parts availability
- » Extended Service Contracts
- » Customer Value Agreements
- » Cat Financial
- » Reman options and Cat Certified Rebuild programs



CAT ELECTRIFIED COMPONENTS

GENERATORS & MOTORS (95 – 340 kW)

PEDJ1061 (11-2022)

For more information, visit [Cat.com/OEMsolutions](https://www.cat.com/OEMsolutions), contact your OEM Solutions Account Manager or email oemsolutions@cat.com

© 2022 Caterpillar
All rights reserved

Materials and specifications are subject to change without notice. The International System of Units (SI) is used in this publication.

CAT, CATERPILLAR, LET'S DO THE WORK, their respective logos, "Caterpillar Corporate Yellow," the "Power Edge" and Cat "Modern Hex" trade dress as well as corporate and product identity used herein, are trademarks of Caterpillar and may not be used without permission.

