

MULCHER TEETH



Models

HM112, HM115, HM208, HM210, HM215, HM316, HM416, HM418, HM518
HM2615, HM3013, HM4015, HM4815, HM5515, HM6015

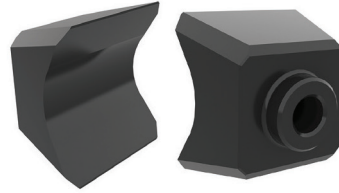
Machine model availability and attachment vary by region. Contact your local Cat® dealer for exact compatibility and availability.



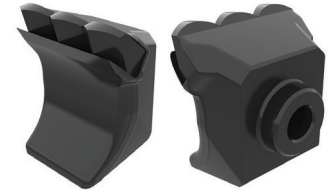
TEETH MODELS

Mulchers are designed for high performance cutting and mulching of vegetation, saplings and undergrowth. Standard chisel teeth provide a consistent cut and finished product. Carbide teeth provide extra wear. Rock resistant teeth last longer when engaging rocky substrate. Side cutting teeth ensure extra efficiency by helping prevent material from bypassing main teeth.

HM112, HM115, HM208, HM210, HM215



REVERSIBLE CHISEL (STANDARD)
For general purpose agricultural mulching. Part Number: 475-2746



CARBIDE-TIPPED CHISEL
For extra long wear. Part Number: 504-6100

SINGLE RETENTION BOLT
Part Number: 482-1444



STANDARD DRUM

HM316, HM416, HM418, HM518, HM2615, HM4015, HM5515



CARBIDE (STANDARD)
For extra long wear. Part Number: 475-2810



SCRAPER (RIGHT SIDE)
Ensures extra mulching efficiency. Standard from factory. Part Number: 475-2811

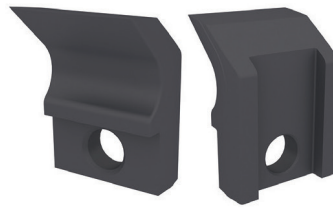


SCRAPER (LEFT SIDE)
Ensures extra mulching efficiency. Standard from factory. Part Number: 475-2812



Requires 570-2134 Chisel Adapter (Required only if changing to chisel teeth or if existing adapter is damaged).

OPTIONAL



CHISEL (STANDARD)
For general purpose agricultural mulching. Part Number: 600-9604



ROCK RESISTANT
Additional carbide surface for use in rocky substrate. Part Number: 475-2813

BITE LIMITER

HM316, HM416, HM418, HM3013, HM4815, HM6015



CARBIDE (STANDARD)

For extra long wear.
Part Number: 475-2810



SCRAPER (RIGHT SIDE)

Ensures extra mulching efficiency.
Standard from factory.
Part Number: 475-2811



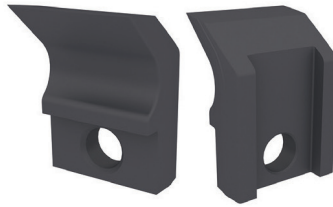
SCRAPER (LEFT SIDE)

Ensures extra mulching efficiency.
Standard from factory.
Part Number: 475-2812



OPTIONAL

Requires 570-2134 Chisel Adapter (Required only if changing to chisel teeth or if existing adapter is damaged).



CHISEL (STANDARD)

For general purpose agricultural mulching.
Part Number: 600-9604



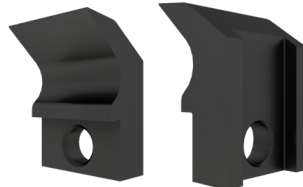
BOLT

For use with all teeth.
Part Number: 570-2044



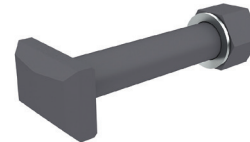
CHISEL (STANDARD) - HM6015

For general purpose mulching.
Part Number: 639-6233



CHISEL BLADE

Part Number: 570-2133



BOLT KIT

Part Number: 475-2816
(Serial Number: MH500001 - MH500146)
Models: HM316, HM416, HM418

Part Number: 487-2141
(Serial Number: MH500147 - MH599999)



KEY FEATURES

Multiple Tooth Options

Standard Carbide for extra wear and extended life conditions. Rock Resistant includes additional carbide for rocky conditions. Chisel Tips for general purpose mulching.

Enhanced Durability

Carbide teeth have 20% higher carbide content than similar products. High flow chisel teeth made from high strength steel forging for extended life. Single bolt retention teeth's T head bolt reduces wear on mulcher drum. Side scraper teeth have additional carbide wear surface for increased durability and extra mulching efficiency.

Made for All Environments

Carbide teeth designed to resist damage from rocks and other hard material. Chisel teeth knife edge slices through all types of trees and vegetation.

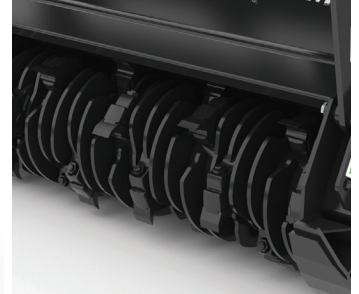
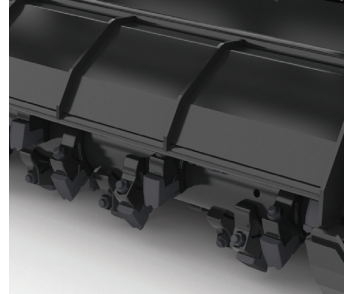
TOOTH DECISION CRITERIA

Criteria	Standard Carbide	Rock Carbide	Chisel
Wear Life	long	longest	short
Finish (wood chip size)	medium	large	small
Maintenance	maintenance free	maintenance free	daily sharpening
Cost	high	high	low
Rock Resistant	medium	high	low



MULCHERS FOR SKID STEER LOADER / COMPACT TRACK LOADERS

HM112, HM115, HM215, HM316, HM416, HM418



Standard Drum Mulcher

Bite Limiter Mulcher

TEETH QUANTITIES PER MODEL

C Series Mulchers			HM112C	HM115C	HM215C
Current Series Mulchers			HM112	HM115	HM215
475-2746	Reversible Chisel (Standard)	For general purpose agricultural mulching.	30	36	36
482-1444	Single Retention Bolt		30	36	36
Optional					
504-6100	Carbide Tipped Chisel	For extra long wear.	30	36	36
475-2747	Teeth Kit (consists of quantity of 10 of 475-2746)		3	4	4

C Series Mulchers			HM315C	HM415C	HM418C
Current Series Mulchers			HM316	HM416	HM418 / HM518*
475-2810	Carbide (Standard)	For extra long wear.	32	32	36
475-2811	Scraper (Right Side, Standard)	Ensures extra mulching efficiency. Standard from factory.	1	1	1
475-2812	Scraper (Left Side, Standard)	Ensures extra mulching efficiency. Standard from factory.	1	1	1
475-2819	Teeth Kit (consists of quantity of 10 of 475-2810)		4	4	4
475-2816	Bolt Kit (Serial Number: MH500001 - MH500146)		34	34	38
487-2141	Bolt Kit (Serial Number: MH500147 - MH599999)		34	34	38

*For Track Type Tractor only

Current Series Bite Limiter Mulchers			HM316	HM416	HM418
600-9604	Chisel Tooth	For general purpose mulching.	24	24	30
475-2811	Scraper (Right Side, Standard)	Ensures extra mulching efficiency. Standard from factory.	1	1	1
475-2812	Scraper (Left Side, Standard)	Ensures extra mulching efficiency. Standard from factory.	1	1	1
Optional					
475-2813	Rock Resistant, additional Carbide surface for use in rocky substrate.				
600-9604	Chisel, Knife tooth requires daily sharpening, please consult Operation and Maintenance Manual (OMM) for proper practices. REQUIRES: 570-2134 Chisel Adapter (one per tooth, only necessary on first installation of Chisel teeth)				

MULCHERS FOR MINI HYDRAULIC EXCAVATOR (MHE) HM208, HM210



MHE Mulcher



Single Retention Bolt
Part Number 482-1444



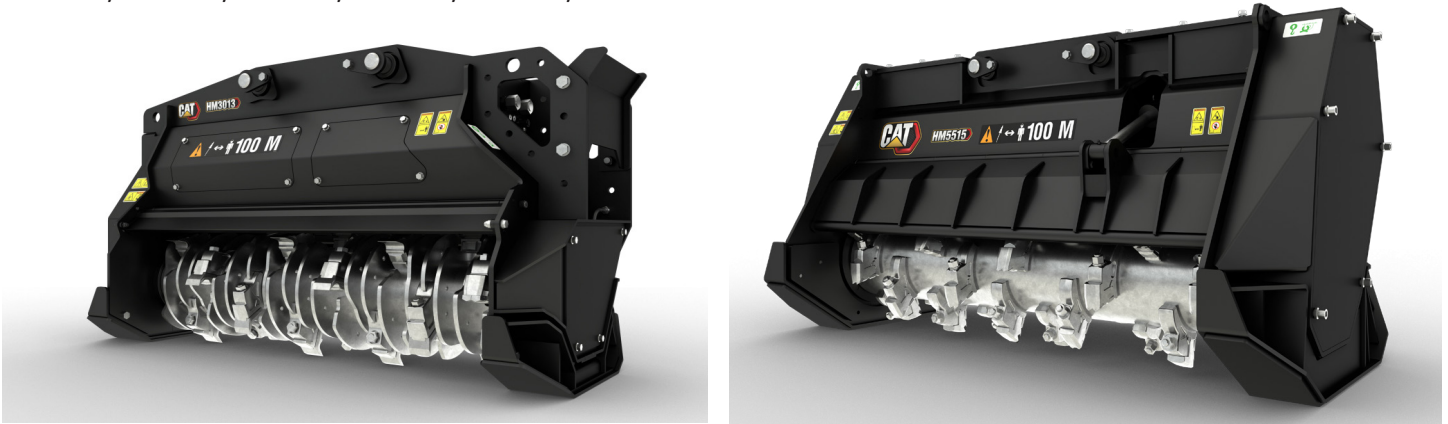
TEETH QUANTITIES PER MODEL

Mulchers For Mini Hydraulic Excavators			HM208	HM210
475-2746	Reversible Chisel (Standard)	For general purpose agricultural mulching.	20	24
482-1444	Single Retention Bolt		20	24
Optional				
504-6100	Carbide Tipped Chisel	For extra long wear.	20	24
475-2747	Teeth Kit (consists of quantity of 10 of 475-2746)		2	3



MULCHERS FOR SMALL, MEDIUM EXCAVATORS AND MATERIAL HANDLERS

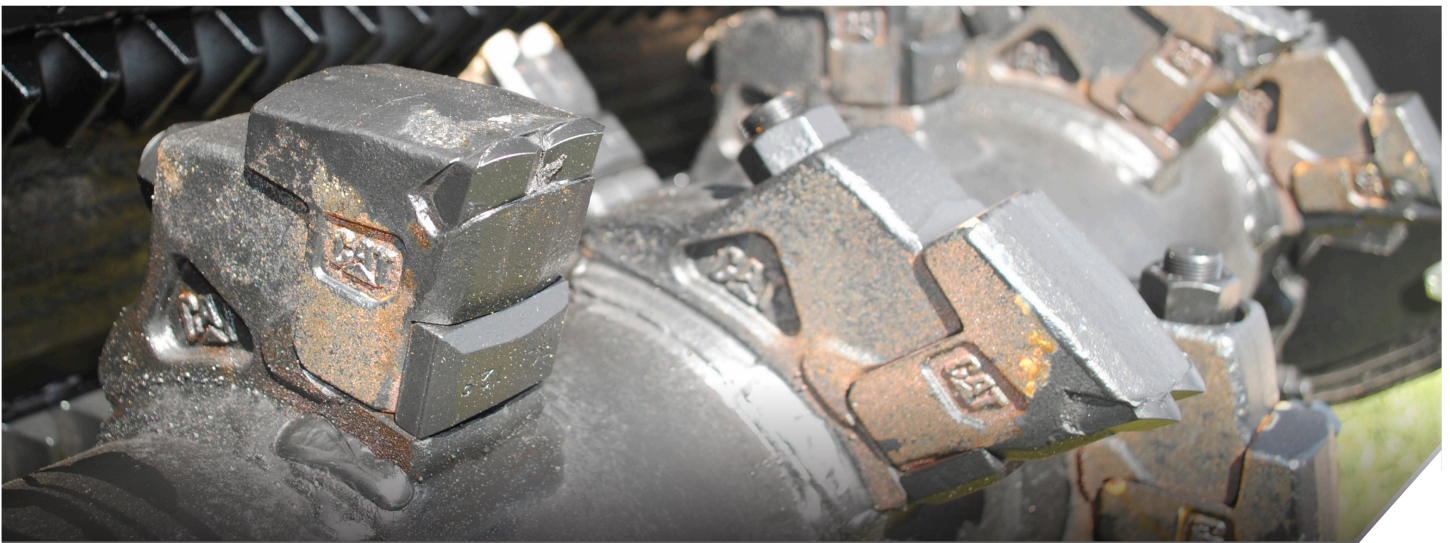
HM2615, HM3013, HM4015, HM4815, HM5515, HM6015



TEETH QUANTITIES PER MODEL

Current Series Mulchers			HM2615	HM4015	HM5515
475-2810	Carbide (Standard)	For extra long wear.	32	40	32
475-2813	Rock Resistant	Additional carbide surface for use in rocky substrate.	32	40	32
600-9604	Chisel (Standard)	For general purpose mulching.	32	40	32
475-2811	Scraper (Right Side, Standard)	Ensures extra mulching efficiency. Standard from factory.	1	2	1
475-2812	Scraper (Left Side, Standard)	Ensures extra mulching efficiency. Standard from factory.	1	2	1

Current Series Bite Limiter Mulchers			HM3013 BL	HM4815 BL	HM6015 BL
600-9604	Chisel (Standard)	For general purpose mulching.	20	24	28
639-6233	Chisel (Standard)	For general purpose mulching.	0	0	28
475-2810	Carbide (Standard)	For extra long wear.	20	24	0
475-2811	Scraper (Right Side, Standard)	Ensures extra mulching efficiency. Standard from factory.	1	1	0
475-2812	Scraper (Left Side, Standard)	Ensures extra mulching efficiency. Standard from factory.	1	1	0





MULCHER



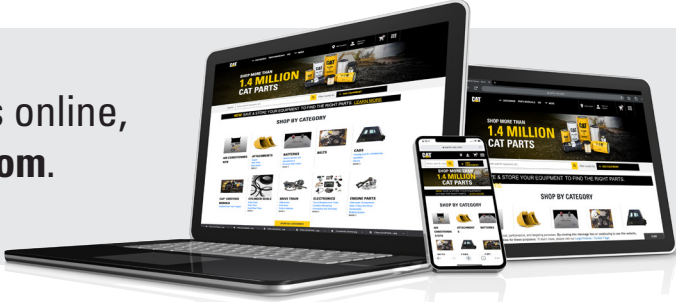
Need help?

Your local Cat dealer can provide:

- Technical Support
- Repair financing
- Rental Services
- Parts needed and equipment fit
- Customer Value Agreements
- Oil sample analysis

Find your local dealer at www.cat.com today.

To buy Cat parts online,
visit **Parts.cat.com**.



PEDJ1253
For more complete information on Cat products, dealer services and industry solutions, visit us at www.cat.com

Materials and specifications are subject to change without notice. Featured machines in photos may include additional equipment. See your Cat dealer for available options.

© 2023 Caterpillar. All Rights Reserved. CAT, CATERPILLAR, LET'S DO THE WORK, their respective logos, "Caterpillar Corporate Yellow", the "Power Edge" and Cat "Modern Hex" trade dress as well as corporate and product identity used herein, are trademarks of Caterpillar and may not be used without permission.

